



GRIDS ASSOCIATES LIMITED
design + turnkey projects

C O R P O R A T E P R O F I L E

GRIDS ASSOCIATES LIMITED
design + turnkey projects



COVER IMAGE: Front view of GR-IDS' corporate office, Lagos

ABOVE: Interior view of GR-IDS' Reception

OUR HISTORY

The firm "GRIDS ASSOCIATES" was formally registered on the 11th of September 1986 and engaged in active consultancy almost immediately. It was established by Architect Abiodun Fari-Arole in partnership with Architect Oluseun Alaba Odeyale.

The firm commenced work in the field of Architecture and Planning as well as Interior Design consultants. Since then, the work of practice has extended considerably in the scope and value which necessitated an expansion in the field. This resulted in the registration of "GRIDS ASSOCIATES LIMITED", a Design and Turnkey Projects company incorporating a consortium of consultants and Builders.

Current projects include architectural consultancy and construction of office buildings and residential developments.

The firm started with staff strength of five people in a rented flat at 22 Akindelu Street, Ikate, Surulere in 1986. The staff strength of the company is now about thirty-five people operating in our offices and our various construction sites. The need for expansion necessitated establishing our Head office at No 44, Modupe Johnson Crescent, Surulere, Lagos and opening a branch office in Abuja with qualified and competent staff.

We at GRIDS ASSOCIATES LIMITED are dedicated to providing you with sound Architectural consultancy services and other related Professional services within our scope in the Building Industry based on economic capital and running costs compatible with the clients requirements and utilizing only the best facilities for reliable results. The success of our endeavors may be measured by the number of distinguished clients who have given us repeat commissions.

We undertake a full range of consultancy services which include: Design and Build (full construction in Building and civil work), Turnkey Projects, Interior Designs and Decoration, Planning, Landscaping and Environmental Master Plans, Project and Property development as well as Project Management.

OUR AIM



To impact on the built environment.



To improve visibility in the corporate environment.



To develop and grow into a property development outfit.



To be a force to be reckoned with within the design and building industry.

FARI-AROLE, Abiodun Rasaq

BSc (Hons), MSc (Arch) MNIA, ARCON No. F/674

PRINCIPAL PARTNER

Attended Ijebu ode Grammar School, Ijebu-ode, Ogun State between 1971 and 1975, St. Anthony's Grammar School Esuru, Ijebu, Mushin between 1975 and 1976 where he completed his Secondary School Education (WAEC).

In 1976, he was admitted at the Federal Government College, Odogbolu, Ogun State. He completed his HSC "A" Levels in 1978, after which he got admission into the now Obafemi Awolowo University, Ile-Ife, Osun State to study Architecture in 1983 and in 1985 he completed his Post Graduate education where he obtained an MSc degree in Architecture. He is a registered member of the Nigerian Institute of Architects and Architects Registration Council of Nigeria.

Modular Group Architects 1981 (Industrial Trainee) International Consulting Architects (NYSC) 1983 Principal Partner Grids Associates (Architects and Planners) 1985 to date and Managing Partner Grids Associates Ltd (Design and Turnkey Projects) 1992 to date.

ODEYALE, Oluseun Alaba

BArch, MArch., MNIA ARCON No. F/615

PRINCIPAL PARTNER

Attended Methodist High School, Ibadan 1969 and 1973 where he completed his Secondary school education (WAEC), Igbobi College, Yaba, Lagos in 1975 where he completed his HSC "A" Levels.

In 1979, he obtained a BSc. (Hons) in Urban Planning and in 1981 a B. Arch. (Hons) in Architecture obtaining both degrees at the University of Maryland, USA. In 1981, he proceeded for his Post Graduate studies at the Morgan State University, USA, where he obtained an M. Arch. degree in Architecture in 1982. He is a registered member of the Nigeria Institute of Architecture and the Architects Registration Council of Nigeria.

Anthony Round and Associates (USA), 1979 (Internship). In 1981 as a Junior Architect, International Consulting Architects for his NYSC, in 1983 to 1984 as a Senior Architect at Tokunbo Omisore Associates between 1984 and 1985. As a Principal Partner at Grids Associates Ltd (Architects and Planners) in 1985 to date.

OUR
PILLARS

OLADIPO, Olatokunbo Olufemi

HND. Architecture

ASSOCIATE PARTNER

Attended Lagos Baptist Academy, Obanikoro, Lagos from 1979 to 1980. Moved to Sherperdhill High School, Obanikoro, Lagos (1980-1984). Later in 1984, he moved to Federal School of Art and Science, Victoria Island, Lagos where he obtained his West African School certificate in 1985.

In 1984, he gained admission into the department of Architecture of the Ogun State Polytechnic, Abeokuta, Ogun State where he obtained the ordinary National Diploma (OND) in 1988 and Higher National Diploma (HND) in 1991.

He also served under the Nigeria Army Engineers, HQ 4, Kano, Kaduna in 1992 for the NYSC as an Architect and in 1993 joined Erids Associates as an Architect.

Apart from the principal partners and their associate, the firm has in its establishment, four Architects, three Project Engineers and twenty-three other supporting staff. All our architects and Engineers are registered with individual professional bodies.

SAPPOR, Eddie Abiola

B.Sc. (HONS), ANIPR

BUSINESS DEVELOPMENT EXECUTIVE

Attended St. Gregory's College, Ikoyi, Lagos and Ono Grammar School, Ono for his secondary education. He is a graduate of University of Nigeria, Nsukka. He possesses vast experience in Media, Marketing and Public Relations.

He is extremely versatile and a developmental strategist.

OLAYIWOLA, Abidemi Aderemi

B. Tech. Architecture

Attended Loyola college, Ibadan, Oyo State. Between 1991-1996. In 1998, he gained admission into the department of Architecture, Ladoke Akintola University of Technology, Ogbomoso, Oyo State where he obtained Bachelor of Technology (B. Tech.) in 2003

Served under the Niger Delta development commission, Up State office, Akwa Ibom State in 2004 as an NYSC Architect and in May 2005 joined Grids Associates Ltd as a Pupil Architect.

KELANI, W Olanrewaju

B .Sc (Hons) M.Arch.

An alumnus of Oniwura High School, Agege Lagos. Between 1991-1996. where he obtained his SSCE in 1997

He was admitted to department of Architecture, Obafemi Awolowo University, Ile-Ife, Osun State where he obtained a B. Sc (Hons) degree in Architecture in 2003. He completed his post-graduate of Education in 2005, having obtained an MArch (Master of Architecture) at the same institution.

- Lagos State Ministry of Housing 1999, (Industrial Training)
- Casabuild (Architects and Planners) 2001-2004 (Industrial Training)
- Grids Associates Ltd (Design and Turnkey Projects) Architect, 2005 to date.



OLUFUNMILADE, Olumide A.

Attended At. Ayo Preparatory School 1991. In 1994, proceeded to Federal Government College, Odogbolu (1994–1997).

1994–1997 where he obtained his SSCE certificate. He gained Admission into the department of Architecture Ladake Akintola University of Technology, Ogbomoso, Oyo State where he obtained (B. Tech) Hons in Architecture in 2004.

- Lagos State Ministry of Housing (Industrial Training)
- Grids Associates Ltd (Industrial Training)
- Grids Associates Ltd (Junior Architect) 2005 to date.

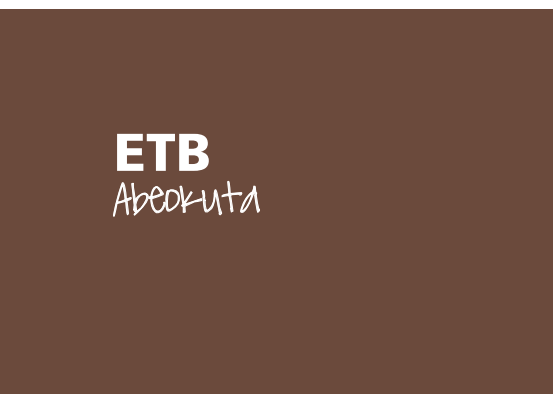
OMOSIGHO, Iyobosa Stephen

Attended St. Mary Private School Ajele 1977–1983, proceeded to St Gregory's college Obalende 1984–1989 where he obtained his SSCE certificate. He gained admission into the department of Architecture Lagos State Polytechnic Ikorodu 1991–1999.

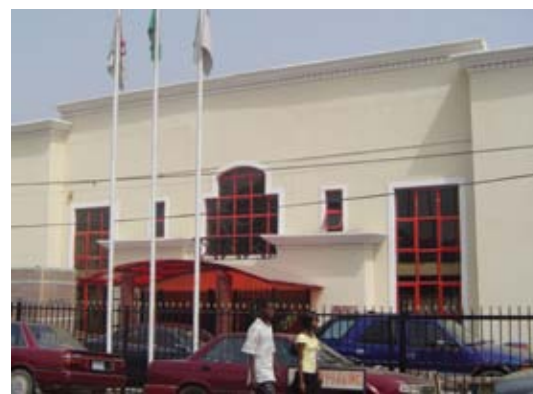
- Ministry of Health (Health System Development Project)
- BOF Design Gallery
- Kayode Anibaba Associates Ltd (Architect)
- Grids Associates Ltd (Architect)

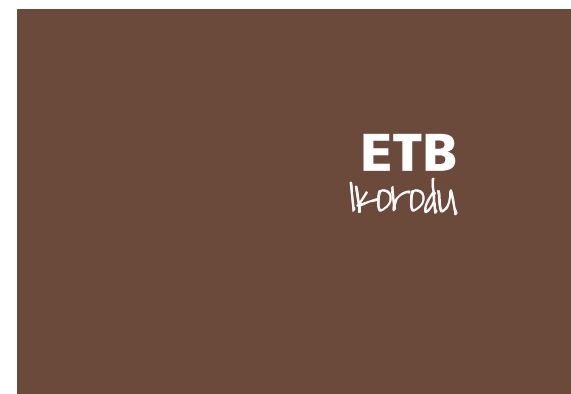


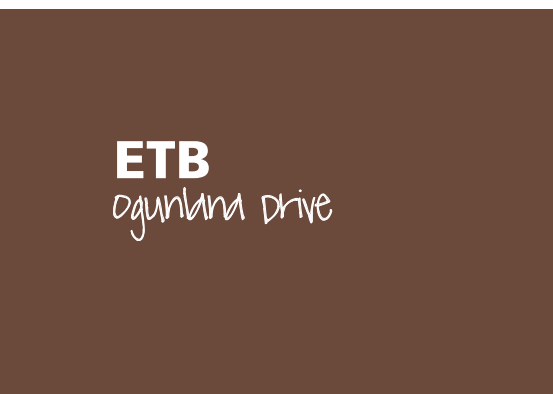
OUR WORK EXPERIENCE



ETB
Abeokuta





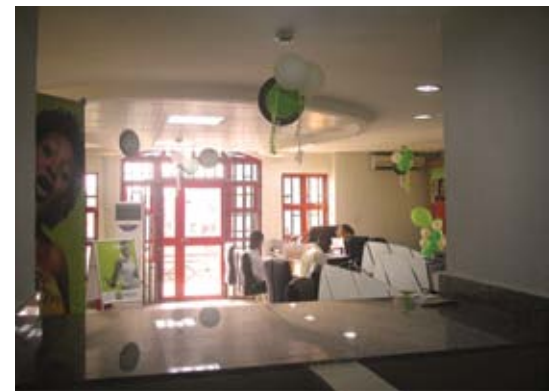
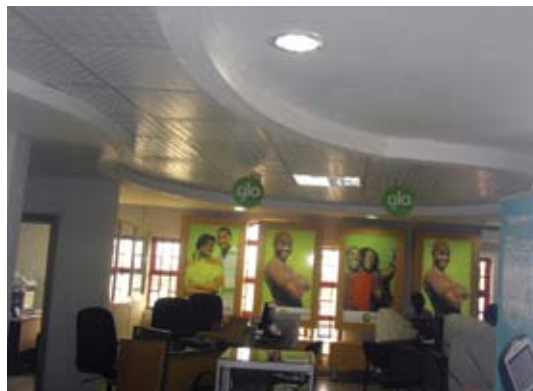






GLO WORLD

Ikoroju & Yaba





**GOVERNOR'S
OFFICE**
Ado-Ekiti



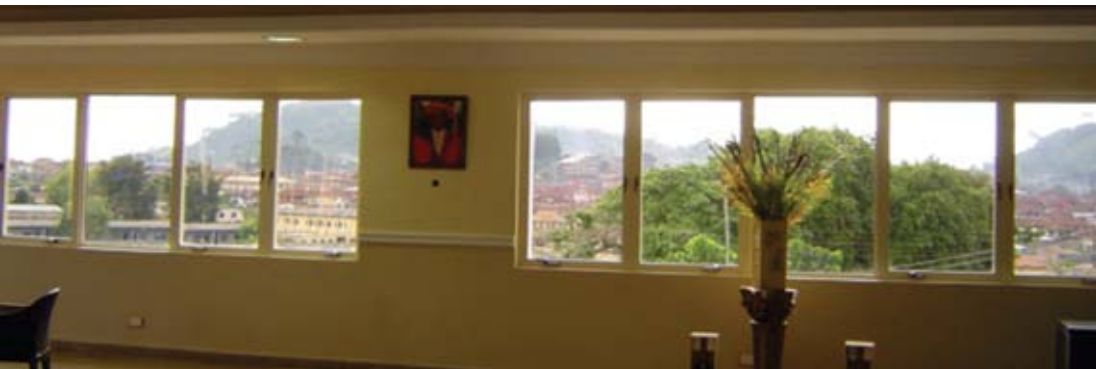
At GRIDS we give optimum attention to the clients expressed objectives, we translate the client objectives into the physical plans needed to construct the optimum facility, this has been accomplished by the careful assignment of clearly defined tasks to the appropriate work groups with reasonable timelines.

We employ the use of quality craftsmanship, excellent finishes, lighting fixtures, furniture and other accessories to give the interior setting a memorable experience.











BANQUET HALL
Trade Fair
Ado-Ekiti







CANAAN MALL

Lekki Peninsula





PROJECT PROPOSALS



**BLOCK OF
LUXURY FLATS**
Lekki Peninsula Phase I

Conoil



**LAGOON
HOMES**
Lekki Peninsula Phase I



TWIN DUPLEX
Carlton Gate Estate,
Lekki-Epe Expressway





TWIN DUPLEX
Carlton Gate Estate,
Lekki-Epe Expressway



**CHAMS OFFICE
REDECORATION**
Victoria Island, Lagos



LUXURY FLATS

Elover Road
Ikoyi Lagos

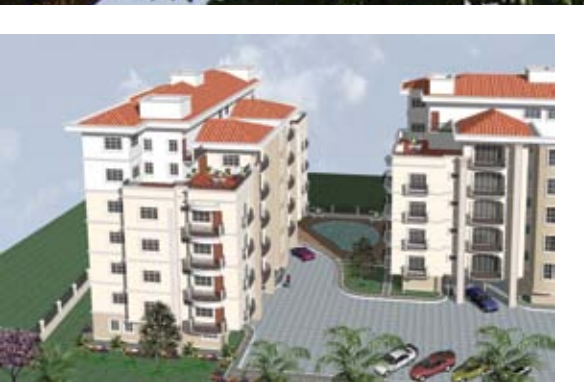


COUNTRY HOME
1 jebu - oke





**DANGOTE
TOWN HOUSES**
Lekki Phase 1, Lagos



DANGOTE LUXURY FLATS

Lekki Lagos





LUXURY FLATS
cameron Road





**HOTEL
DEVELOPMENT**
Lekki Lagos



1004
LUXURY FLATS
Victoria Island



**CITY LODGE
HOTEL**
Jos Plateau





**CHAMS OFFICE
REDECORATION**
Victoria Island, Lagos



**OFFICE
COMPLEX**
Port Harcourt



**LUXURY
FLATS**
APAPA, LAGOS



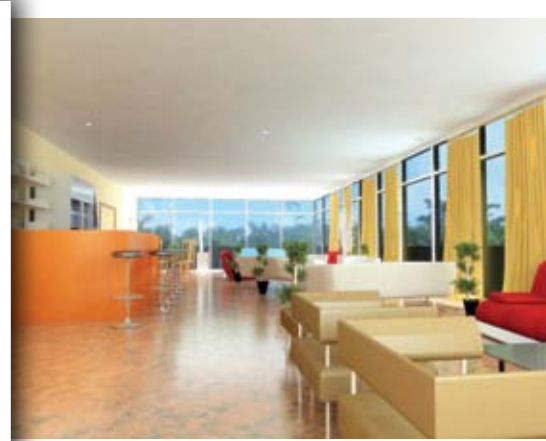


**HOTEL
DEVELOPMENT**
Lekki Lagos





**LAMATA
HEADQUARTERS**
Lagos





**OGUN STATE
LIASON OFFICE**
Ikeja Lagos





NAVAL HOTEL
KOJI LAGOS





**MARRIOT -
POLICE HOTEL**
onikan Lagos





**COMMERCIAL
BUILDING**
Maryland, Lagos





**OVATION
INTERNATIONAL**





**RESIDENTIAL
DESIGN**
FASUYI

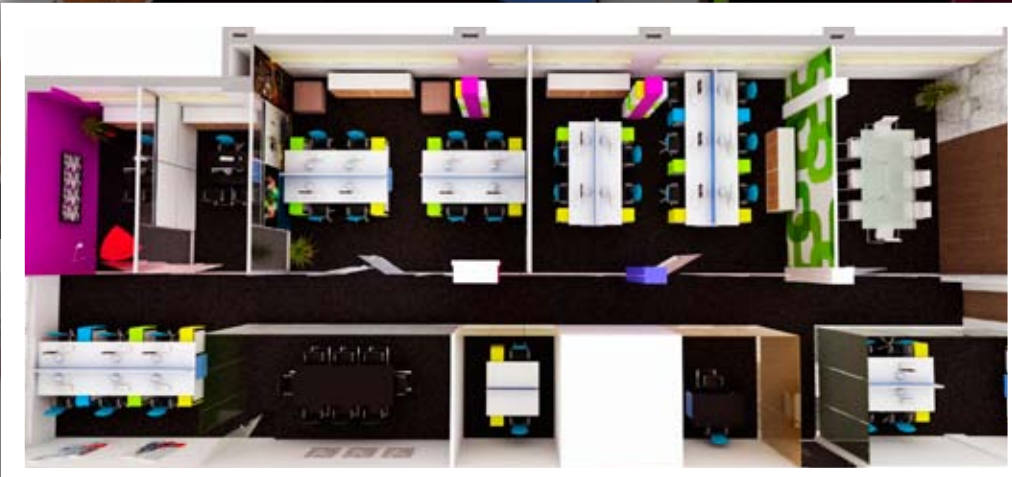
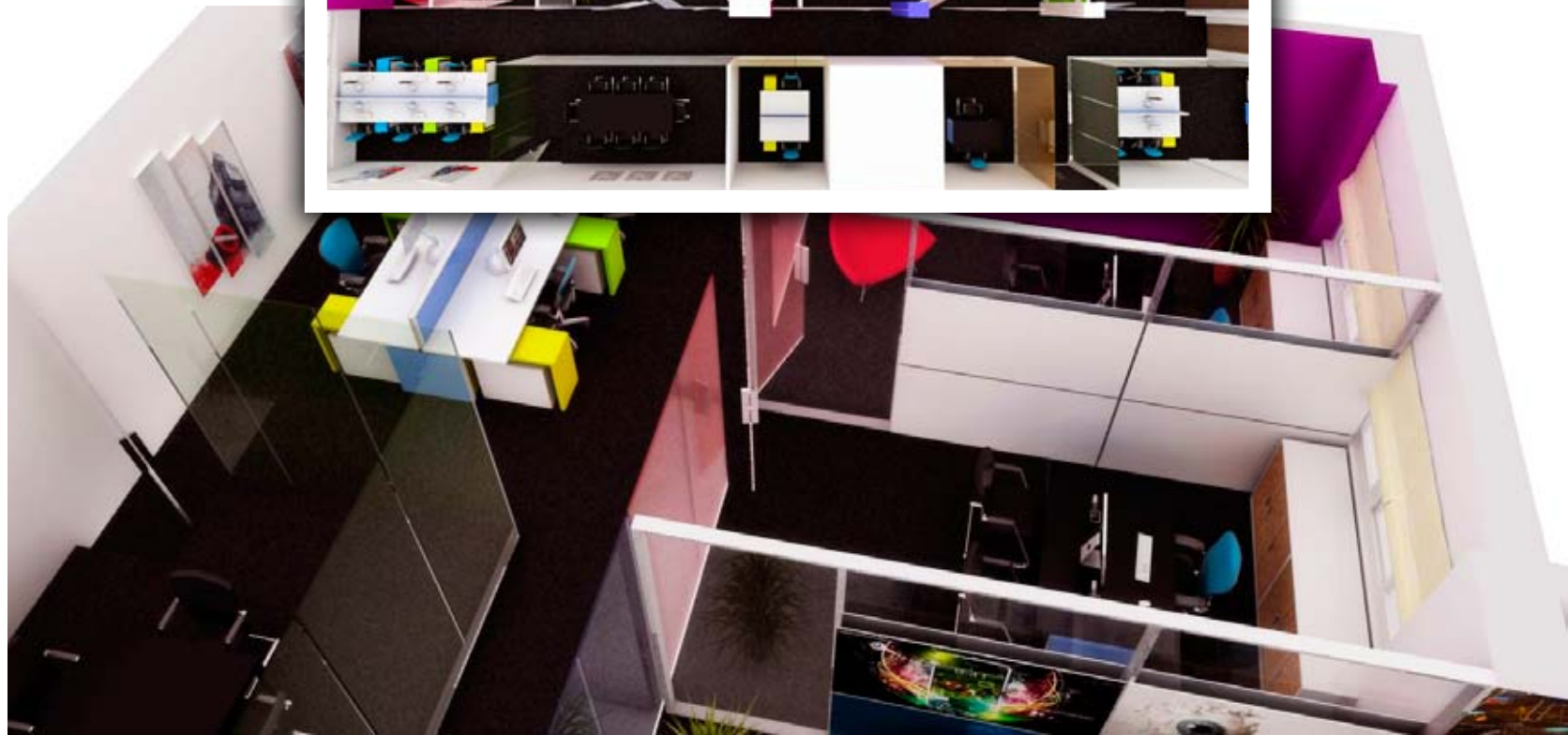




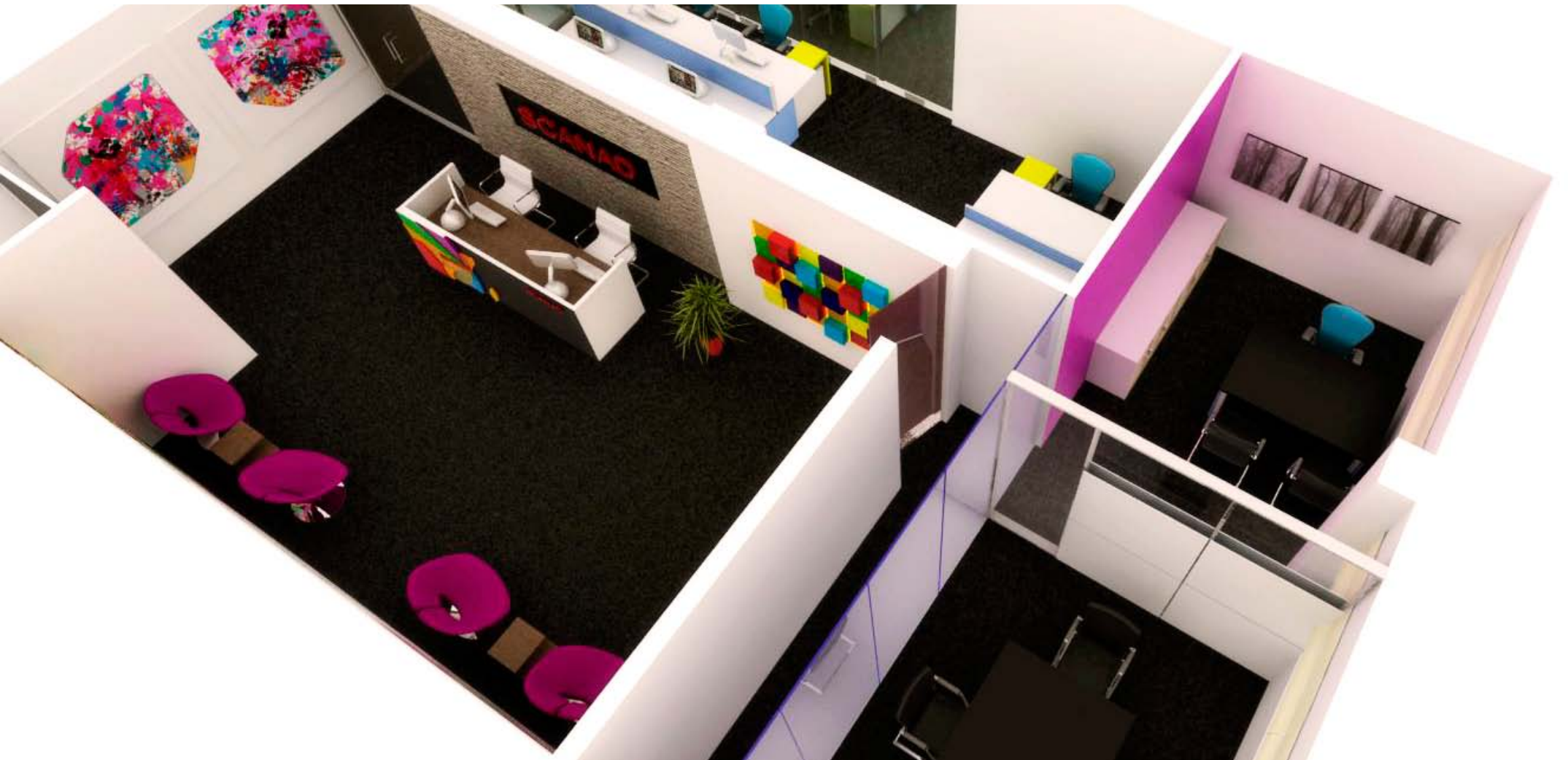
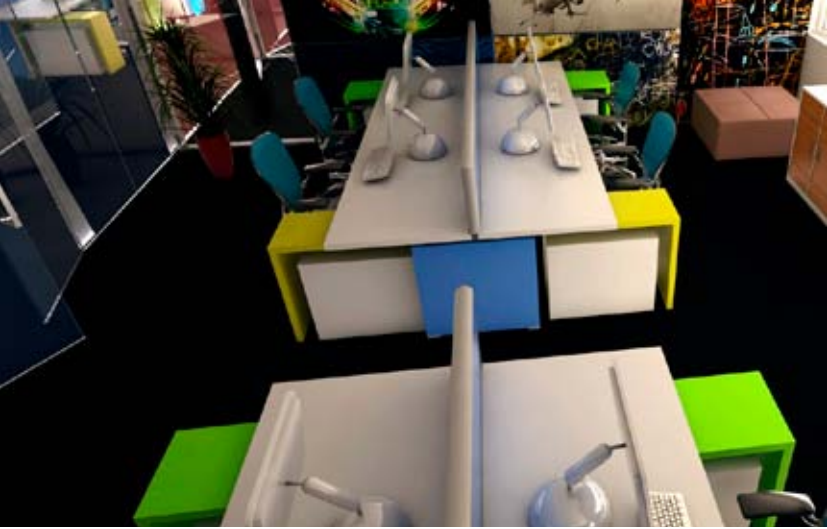
**RESIDENTIAL
DESIGN**
ghana







SCANAD







EXECUTED PROJECTS

LIST OF SOME PROJECTS HANDLED BY GRIDS ASSOCIATES

PROJECTS	CLIENTS	INVOLVEMENT	YEAR	COST
1. Residential Building Complex at Okota	Chief M.A.O. Akeredolu P. O. Box 70135, V/Island, Lagos	Design/Construction	1988	₦2.6M
2. Office Block at Plot 42, Imam Ligali Street, Lagos	Engr. B. O. Daramola	Design	1989	₦2.8M
3. Multi-Purpose Office Complex at Ikorodu Rd., Lagos	Ineh-Mic Holdings Ltd. 47, Adeniran Ogunsanya Str, Lagos	Design	1989	₦10.5M
4. Residential Building at Lekki Peninsula	Mr. K. O. Banasko 32/34 Olukunle Selesi Crescent Ajao Estate, Lagos	Design	1990	₦3.5M
5. Residential Housing Estate at Abuja	Bashorun M.K.O. Abiola 362, Herbert Macaulay Str, Yaba, Lagos	Design	1990	₦30.0M
6. Office Partitioning at Lagos	Summit Oil International Ltd 362, Herbert Macualay Str., Yaba, Lagos	Design/Construction	1990	₦0.8M
7. Petrol Station	Amalgamated Oil Co. Nig. 114, Broad Street, Lagos	Design	1991	₦5.6M
8. Office Block, Abuja	Mr. Maxwell Ajiya c/o 362 Herbert Macaulay Str., Yaba, Lagos	Design	1991	₦18.8M
9. Concord Airlines Terminal Building	Concord Airlines Nig. Ltd. Old Domestic Wing, M. M. Airport, Lagos	Design/Construction	1991	₦2.5M
10. Cocoa Processing at Ile-Ife	Factory Romod Industries Ltd. 6th Floor, Crusader House 16, Commercial Ave., Yaba, Lagos	Design	1992	₦45.8M
11. 3 No Residential Bungalows at Maryland, Lagos	Ooni of Ife	Design/Construction	1992	₦4.5M

LIST OF SOME PROJECTS HANDLED BY GRIDS ASSOCIATES

PROJECTS	CLIENTS	INVOLVEMENT	YEAR	COST
12. Yebumot Hotel at Ilorin	Yebumot Enterprises Ltd P.O. Box 2133, Apapa, Lagos	Design/Construction	1993	₦3.6M
13. Urban Development Bank Head Office Complex, Wuse, Abuja	Urban Development Bank Plc.	Design	1993	₦250.0M
14. Mixed Use Development (Dynasty Towers) at Etim Nyang Street, V/Island.	Investment Options & Venture Capital Ltd.	Design	1993	₦35.0M
15. Office Remodelling at 9, Breadfruit Street, Lagos	Mr. Dotun Duro-Emmanuel c/o Pagade Holdings	Design/Construction	1993	₦2.5M
16. Warehouse and Gatehouse at Eric Moore Rd., Surulere, Lagos	Nigerian Ropes Plc	Design/Construction	1993	₦1.4M
17. Office Remodelling at 57 Ikorodu Road, Fadeyi, Lagos	McRoyals Investments	Design/Construction	1993	₦8.0M
18. Residential Development (Block of 6 Flats) Abuja	Commodore S. Akano	Design/Construction	1993	₦5.0M
19. Residential Development at Lekki Peninsula, V/Island, Lagos	Mrs. Shade Coker	Design/Construction	1993	₦4.5M
20. Conversion of a Residential Building to an Office Block at 31 Opebi Rd., Ikeja	Mr. Biodun Shobanjo	Design/Construction	1993	₦10.2M
21. Office Complex Bashorun Abiola Rd., Ebute-Metta, Oyingbo	New Prudential Mortgage Finance Ltd.	Design	1993	₦8.5M
22. Office Partitioning & Remodelling	NICON Insurance Plc (Head Office)	Design/Construction	1994	₦8.2M

LIST OF SOME PROJECTS HANDLED BY GRIDS ASSOCIATES

PROJECTS	CLIENTS	INVOLVEMENT	YEAR	COST
23. Office Complex at Obafemi Awolowo Way, Ikeja.	A. A Oil Nig. Ltd	Design	1994	₦90.0M
24. Residential Building at 91, Forsythe Street, Lagos	Dr. E. O. St. Mathew-Daniel	Design	1994	₦10.2M
25. Design of a Prototype Filling Station	African Petroleum/Empire Group	Design	1994	₦5.0M
26. Residential Development at Ogba, Lagos.	Chief Bayo Fatusin	Design/Construction	1995	₦15.0M
27. Condominium Apartments	Capital Ventures, V I. Lagos	Design	1995	₦60.0M
28. Residential Building at G.R.A, Ikeja	Mrs. Toyin Akerele-Ayeni	Design/Construction	1995	₦22.0M
29. Residential Building Orlu L.G.A., Imo State	Mr. Innocent Ezeonyiwara	Design/Construction	1995	₦50.0M
30. Remodelling / Completion of Residential Development Lekki Peninsula, Lagos	Sen. (Dr.) Lee Nwokeafor	Design/Construction	1995	₦22.0M
31. Yebumot Hotel Annex, Lagos	Yebumot Hotels Nig. Ltd P.O. Box 2133, Apapa, Lagos	Design/Construction	1995	₦6.2M
32. 2 Blocks of Flats at Abule-nla, Lagos	Lagos Building Investment Co., Lagos	Design/Construction	1996	₦25.0M
33. Shopping Arcade, Abuja	Kena Oil & Gas Ltd	Design	1997	₦75.0M
34. Night Club & Restaurant, Abuja	Chief Obiora Okonkwo	Design	1998	₦80.0M
35. Shopping Mall, Abuja	Nicon Insurance Plc	Design	1998	₦300.0M
36. Remodelling of Liaison Office Victoria Island, Lagos	Nasarawa State Govt	Design/Construction	1998	₦40.0M

LIST OF SOME PROJECTS HANDLED BY GRIDS ASSOCIATES

PROJECTS	CLIENTS	INVOLVEMENT	YEAR	COST
37. Residential Development at Ogudu G.R.A.	Gen. David Jemibewon	Design	1998	₦35.0M
38. Residential Development Abuja	Hexton Investments Ltd	Design/Construction	1999	₦25.0M
39. Single Family Unit & Semi-Detached Duplex, Shangisha Lagos	Mr. Ola Yusuf	Design	1999	₦30.0M
40. Troyka House Alausa, Ikeja, Lagos	Insight Communication Ltd	Design	1999	₦120.0M
41. 2 Blocks of Flats at Abule-nla, Lagos	Lagos Building Investment Company, Lagos	Design/Construction	1999	₦35.0M
42. Chairman's Guest Houses, at Luggard Road, Ikoyi, Lagos and Maitama, Abuja	Nigeria Port Authority	Redesign/Construction	2001	₦180.0M
43. Takwa BayGuest Chalets	Nigeria Port Authority	Redesign/Construction	2001	₦104.0M
44. Residential Development at Ikeja	Mr. Tokunbo Kole Emmanuel	Design	2001	₦52.0M
45. Luxury Flats at Apapa	Seaview Properties Ltd. (Subsidiary of NPA)	Design	2001	₦350.0M
46. Branch Developments, Abeokuta	Equitorial Trust Bank Ltd	Construction	2002	₦20.0M
47. Twin Duplex @ Parkview Est., Ikoyi	Mr. Gboyega Oduniyi	Design/Construction	2002	₦80.0M
48. MD's Residence, Asokoro, ABUJA	NICON Insurance	Redesign/Construction	2002	₦46.0M
49. Block of Six Luxury Flats (Redecoration), V/I, Ikoyi	NICON Insurance	Design	2002	₦160.0M
50. Residential Building at V.G.C	Iyabo Ezekiel	Design/Supervision	2002	₦100.0M
51. Branch Development, Yenagoa	Equitorial Trust Bank Ltd	Design/Construction	2003	

LIST OF SOME PROJECTS HANDLED BY GRIDS ASSOCIATES

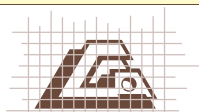
PROJECTS	CLIENTS	INVOLVEMENT	YEAR	COST
52. Branch Development, Makurdi	Equitorial Trust Bank Ltd.	Design/Construction	2003	
53. Branch Development, Maiduguri	Equitorial Trust Bank Ltd.	Design/Construction	2003	
54. Trade Fair Complex, Badagry	Equitorial Trust Bank Ltd.	Design/Construction	2003	
55. Branch Development at Trade Fair Complex, Badagry	Devcom Bank Ltd.	Design/Construction	2003	₦15.00M
56. Block of Offices, Apapa Port	Nigeria Port Authority	Redesign/Construction	2003	₦25.00M
57. Conoil Petrol Station	Conoil	Design	2003	₦120.00M
58. Residential building	Mr. K.O Banasko	Design/Supervision	2003	₦80.00M
59. Single family dwelling at Igbo-Efon, Eti-Osa L.G Lekki	Mr. Kunle Ogunmefun	Design/Project Management	2003	₦35.00M
60. Single Family Dwelling, Co-operate Estate, Badore	Ms. Prisca Soares	Design/Construction	2003	₦30.00M
61. Single Family Dwelling at G.R.A., Abeokuta	QMB Investment	Design	2003	₦85.00M
62. Branch Development, Asaba	Equitorial Trust Bank Ltd.	Construction	2003	₦65.00M
63. Residential Development at Victoria Garden City	QMB Investment	Design	2004	₦55.00M
64. Proposed Luxury Flats at Lekki Phase I	Dr. Ismaila Adiatu	Design	2004	₦350.00M
65. Lagoon Homes Terrace Houses	Lagoon Home Savings & Loans	Design/Supervision Consultancy	2004	₦150.00M
66. Branch Development, Ogunlana Drive, Surulere, Lagos	Equitorial Trust Bank Ltd	Design	2003	

LIST OF SOME PROJECTS HANDLED BY GRIDS ASSOCIATES

PROJECTS	CLIENTS	INVOLVEMENT	YEAR	COST
67. Luxury Flats at Parkview, Ikoyi	Mr. Lekan Onamusi	Design	2005	₦320.00M
68. Office Block at Oregon	Elephant Group Ltd.	Design	2005	₦60.00M
69. 3-Star Hotel at Ijebu-Ode	Hon. Lekan Mustapha	Design/Project Management	2005	₦300.00M
70. Governor's Office at Ado-Ekiti, Ekiti State	Ekiti State Government	Construction	2005	₦800.00M
71. Banquet Hall Trade Fair Complex, Ado-Ekiti	Ekiti State Government	Design/Construction	2005	₦150.00M
72. Fountain Hotel, Trade Fair Complex, Ado-Ekiti	Ekiti State Government	Design/Construction	2005	₦400.00M
73. Block of Luxury Flats at Iyaganku G.R.A., Ibadan	StudioPlus Nig. Ltd.	Design	2005	₦40.00M
74. Faj. Luxury Flat	Faj Estate Ltd., Parkview, Ikoyi	Design	2005	₦250.00M
75. Twin Duplex at Lekki	Mr. Babatunde Balogun	Design/Construction	2006	₦75.00M
76. Country Home at Ekiti	StudioPlus Nig. Ltd.	Design	2006	₦60.00M
77. Glo World Offices at Herbert Macaulay, Ikorodu, Yenagoa, Abeokuta, Maiduguri	Globalcom	Design/Construction	2006	
78. Branch Development at Hawley Street, Lagos	Equitorial Trust Bank Ltd.	Design/Construction	2006	
79. Branch Development, Ikorodu, Lagos	Equitorial Trust Bank Ltd.	Design/Construction	2006	
80. Branch Development, Herbert Macaulay, Lagos	Equitorial Trust Bank Ltd.	Design/Construction	2006	

LIST OF SOME PROJECTS HANDLED BY GRIDS ASSOCIATES

PROJECTS	CLIENTS	INVOLVEMENT	YEAR	COST
81. Proposed Luxury Flats at Lekki, Lagos	Dangote Group	Design	2007	₦1.76B
82. Proposed Hotel at Lekki, Lagos	Sigma Investment Ltd.	Design	2007	₦1.55B
83. Proposed Luxury Flats at Apapa, Lagos	Aberdeen Properties Ltd	Design	2007	₦1.26B
84. Proposed LAMATA Head Office	LAMATA	Design	2008	₦1.10B
85. Proposed Medium Income Estate at Idi-Araba Lagos	Breezy Knolls Est. Ltd./ Lagos State Government	Design	2008	₦1.40B
86. Proposed Ogun State Liaison Office at G.R.A., Ikeja, Lagos	Ogun State Government	Design/Construction	2008	₦350.00M
87. Proposed Commercial Building at Port-Harcourt	Rajol Jireh Ltd	Design/Construction	2008	₦200.00M
88. Proposed Guest House at Abuja	Chief Joco James	Design/Construction	2008	₦250.00M
89. Facade Remodeling at Victoria Island, Lagos	Chams Nigeria Plc.	Design/Construction	2008	₦30.00M
90. Proposed Luxury Flats at Banana Island, Lagos	Grand Villas Ltd.	Design	2008	₦630.00M
91. Proposed Luxury Flats at Glover, Ikoyi, Lagos	Grand Villas Ltd.	Design/Project Management	2008	₦4.50B
92. Proposed Ogun State Liaison Office Ikeja, Lagos	Ogun State Government	Design	2008	₦300.00M
93. Navy Hotel at Ikoyi	Nigerian Navy/Crown Realties Plc.	Design	2009	₦3.80B
94. Police Hotel at Onikan	Nigeria Police Force	Design	2009	₦5.60B
95. Commercial Building at Maryland, Lagos	Lisabi Mills Nig. Ltd,	Design	2010	₦1.20B



GRIDS ASSOCIATES LTD.
design + turnkey projects
RC:211720

44, modupe johnson crescent, off adeniran ogunsanya street, surulere, lgos p.o. box 70135, victoria island, lgos
tel: +234 (1) 2830283, 5830684, 8125696 fax: +234 (1) 5835901, 283 0483

branch office: plot 497, aminu kano crescent, wuse ii, abuja tel/fax: +234 (9) 4134036

e-mail: gridsassociates@consultant.com

website: www.gridsassociates.com